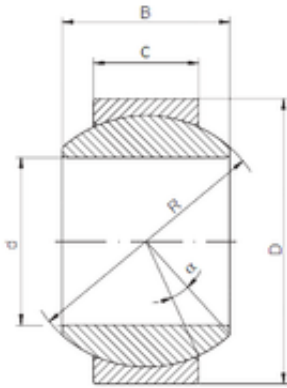


12 mm x 26 mm x 15 mm ISO GE 012 HS plain bearings



Bearing No. GE 012 HS

Size	12x26x15 mm
Bore Diameter	12 mm
Outer Diameter	26 mm
Width	15 mm
d	12 mm
D	26 mm
B	15 mm
C	9 mm
R	22 mm
Angle	18 °

GE 012 HS Bearing 2D drawings and 3D CAD models